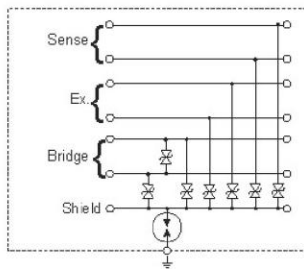


Loadcell Protector



- 6 wires and shield protection – works with 4 or 6 wire systems
- Suitable for compression or tension cells
- Low series impedance – loadcells do not need recalibration
- NEMA-12 (IP-55) rated – suitable for outdoor use
- Protects against excitation over-voltage – prevents loadcell damage



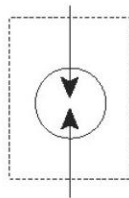
Model	LCP 01A
Item Number for Europe	701610
Max. Discharge Current I_{max}	300A 8/20 μ s (signal to shield) 10kA 8/20 μ s (shield to ground)
Technology	Silicon Avalanche Diode
Voltage Protection Level U_p	30V (signal to shield) 15V 8/20 μ s (signal to signal) 90V (shield to ground)
Loop Resistance	<0.25 Ω
Dimensions	110 mm x 75 mm x 56 mm (4.3" x 2.9" x 2.2") approx.
Weight	0.25 kg (0.55 lb)
Enclosure	ABS, IP55 (NEMA-12)
Connection	Screw terminals for 4 or 6 wire loadcells
Temperature	-40°C to +80°C (-40°F to +176°F)

Potential Equalization Clamp



- High peak current capability – long service life
- Weatherproof enclosure – suitable for direct burial
- ATEX approved – suitable for use in potentially explosive atmospheres

The PEC is an equipotential bonding device that can be used to minimize damage in applications where separated ground systems are required. The PEC is ATEX approved, making the device suitable for use in explosion hazard areas such as the protection of pipeline insulated joints.



Model	PEC 100
Item Number for Europe	702900
Spark Over Voltage	350V +/- 15% @100V/s
Max. Discharge Current I_{max}	100kA 8/20 μ s
Technology	Gas Discharge Tube (Auto reset)
Insulation Resistance	>1G Ω
Capacitance	<10pF
Voltage Protection Level U_p	800V @ 1kV/ μ s
Dimensions	138 mm x 25 mm (5.4" x 1") approx.
Weight	0.5 kg (1.1 lb) approx.
Enclosure	Suitable for outdoor or direct burial
Connection	450 mm of 16 mm ² (17" of #5AWG) conductor
Temperature	-20°C to +60°C (-4°F to +140°F)
Approvals	CE, ATEX, BASEEFA Approved

DISTRIBUIDO EN MEXICO POR:

VALDEZ INGENIEROS S.A DE C.V