

CRITEC® SLP/HSP

Asia/Australia
Europe
Latin America
North America

Subscriber/High Speed Line Protection/Termination



DLT (#702721) available where screw terminal connections are required (2.5mm²).

- Single and multi stage protection – primary or combination primary/secondary protectors
- Single pair and 10 pair protectors
- Simple installation into Krone-LSA® disconnect block
- L-L & L-G protection – for comprehensive protection
- HSP High Speed Protectors support 8Mbit/s digital and 12MHz analog networks

* Krone-LSA is a registered trademark of Krone GmbH, Germany

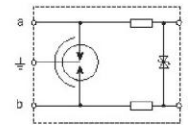
The Subscriber Line Protector (SLP) and High Speed Protector (HSP) are designed for the protection of telecommunication and data circuits that terminate on 10 pair Krone-LSA plus disconnect blocks. The DIN rail mount Data Line Termination (DLT) screw terminal block allows these protectors to be used in applications where disconnect blocks are not fitted.

The SLP1 K2 is a single pair protector, suited to protection of traditional voice circuits. The SLP10K1F is a 10 pair protector for voice and high speed data circuits.

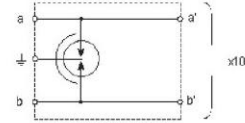
The HSP series feature multiple protection stages providing enhanced protection. The K12, 36 and 72 are low voltage units suited to industrial/signalling applications. The K230 is suited to protection of sensitive voice and high speed data circuits.

Model	SLP1 K2*	SLP10 K1F	HSP10 K12	HSP10 K36	HSP10 K72	HSP10 K230
Item Number for Europe		701540	700815	700805	700850	700860
Max. Cont. Operating Voltage U _c	190V ⁼⁼⁼	190V ⁼⁼⁼	13V ⁼⁼⁼	40V ⁼⁼⁼	65V ⁼⁼⁼	190V ⁼⁼⁼
Max. Line Current I _l	120mA	1000mA	150mA			
Max. Discharge Current I _{max}	20kA 8/20 μ s (L-L)-E					
Technology	Multi stage	Single stage	Multi stage			
Frequency	2Mbits 3MHz	8Mbits 12MHz	8Mbits 12MHz			
Insertion Loss	<0.75dB		<0.4dB			
Return Loss	<22dB		<20dB			
Impedance Balance	<48dB		<55dB			
Loop Resistance	20 Ω	0.2 Ω	16.4 Ω		6.6 Ω	
Dimensions	125 mm x 34.5 mm x 21 mm					
Connection	Krone LSA Plus termination system					
Temperature	-20°C to +60°C (-4°F to 140°F)					
Humidity	0% to 90%					
Approvals	CE, C-Tick, A-Tick		CE, C-Tick		CE, C-Tick, A-Tick	

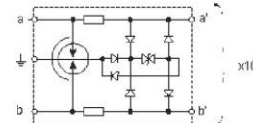
*Ground bar accessory, (P/N SLP-EB), required per 10 pair Krone-LSA block.



SLP1 K2



SLP10 K1F



HSP

DISTRIBUIDO EN MEXICO POR

VALDEZ INGENIEROS S.A DE C.V